

## SPECIAL 1" DIAPHRAGM PUMPS (1:1 Ratio - Calcium Chloride Compatible)

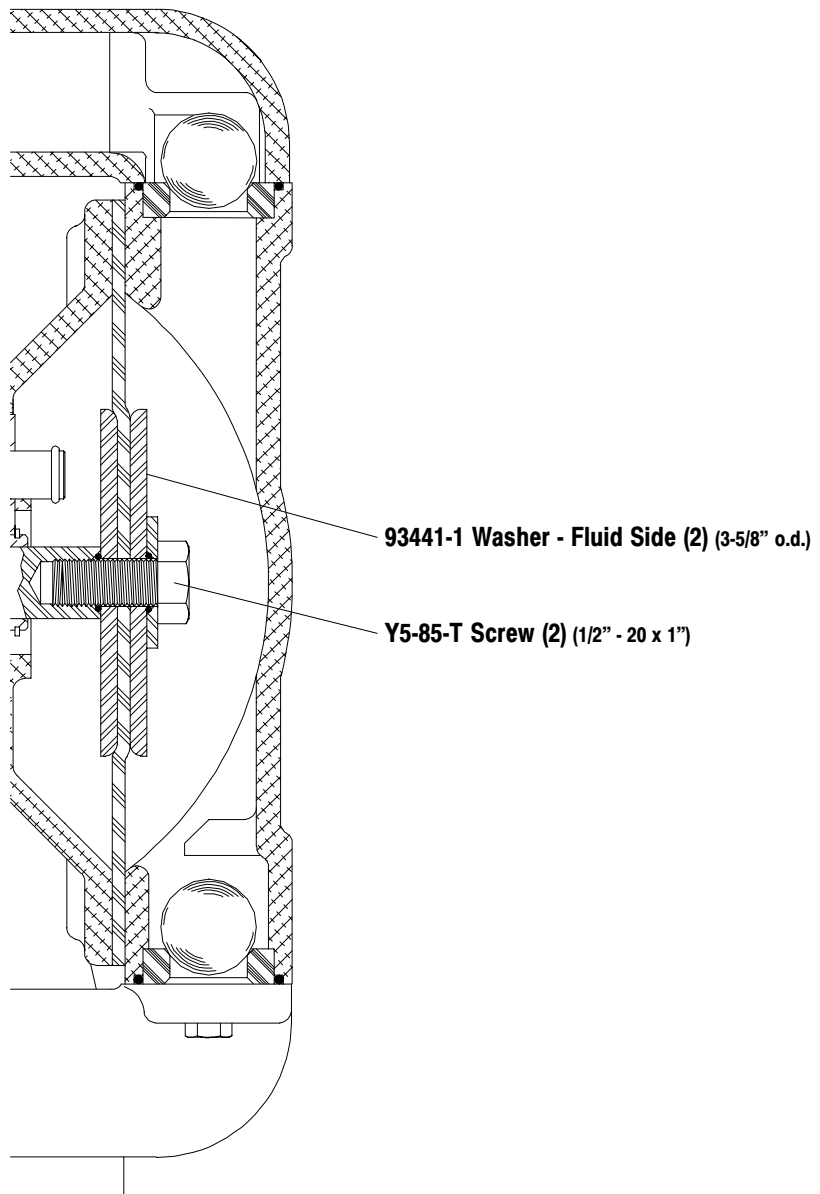


**READ THIS MANUAL CAREFULLY BEFORE INSTALLING,  
OPERATING OR SERVICING THIS EQUIPMENT.**

It is the responsibility of the employer to place this information in the hands of the operator. Keep for future reference.

Model 67144 is similar to standard model 666100-441-C diaphragm pump, with exceptions as shown below. Model 67144 is equipped with stainless steel (6) fluid side washers and (14) screws.

A 66610X-X-C Operator's Manual (97999-100) is to be used for General Information, Installation, Operation and Maintenance. Follow the standard parts list with the exceptions of the items listed below.



PN 97999-953

INGERSOLL-RAND COMPANY  
P.O. BOX 151 • ONE ARO CENTER • BRYAN, OHIO 43506-0151  
☎ (419) 636-4242 • FAX (419) 633-1674 ©2000 • PRINTED IN U.S.A.

